



UNIVERSITY OF
EASTERN FINLAND

University of Eastern Finland
Basic material for the
***FINEEC** audit 2016*

CONTENTS

1	UEF ORGANISATION	3
2	DESCRIPTION OF THE STRATEGY AND STRATEGY FORMULATION PROCESS OF UEF	5
3	FIGURE AND A CONCISE DESCRIPTION OF THE QUALITY MANAGEMENT SYSTEM	8
4	STATISTICS ON EDUCATION	9
5	INFORMATION RELATING TO THE OPTIONAL TARGET	28
6	INFORMATION RELATING TO THE DEGREE PROGRAMMES	30
6.1	Curriculum of the Bachelor's and Master's degree programmes in pharmacy	30
6.2	Objectives and content of the Bachelor of Pharmacy degree	31
6.3	Objectives and content of the Master of Pharmacy degree	32
6.4	Curriculum of the Doctoral Programme in Forests and Bioresources	32
7	SEPARATE APPENDICES	34

1 UEF ORGANISATION

WITH APPROXIMATELY 15,000 students and 2,800 staff members, the University of Eastern Finland, UEF, is one of the largest universities in Finland. The University of Eastern Finland was established in 2010 as the result of the merger of the University of Joensuu and the University of Kuopio. The university's campuses are located in Joensuu, Kuopio and Savonlinna.

UEF is a multidisciplinary university, which offers teaching in more than 100 major subjects. We have four faculties: the Philosophical Faculty, the Faculty of Science and Forestry, the Faculty of Health Sciences, and the Faculty of Social Sciences and Business Studies. Independent institutes: Pharmacy, Aducate, Language Centre, Library. The Philosophical Faculty hosts two teacher training schools: Joensuu Teacher Training School and Savonlinna Teacher Training School (Figure 1).

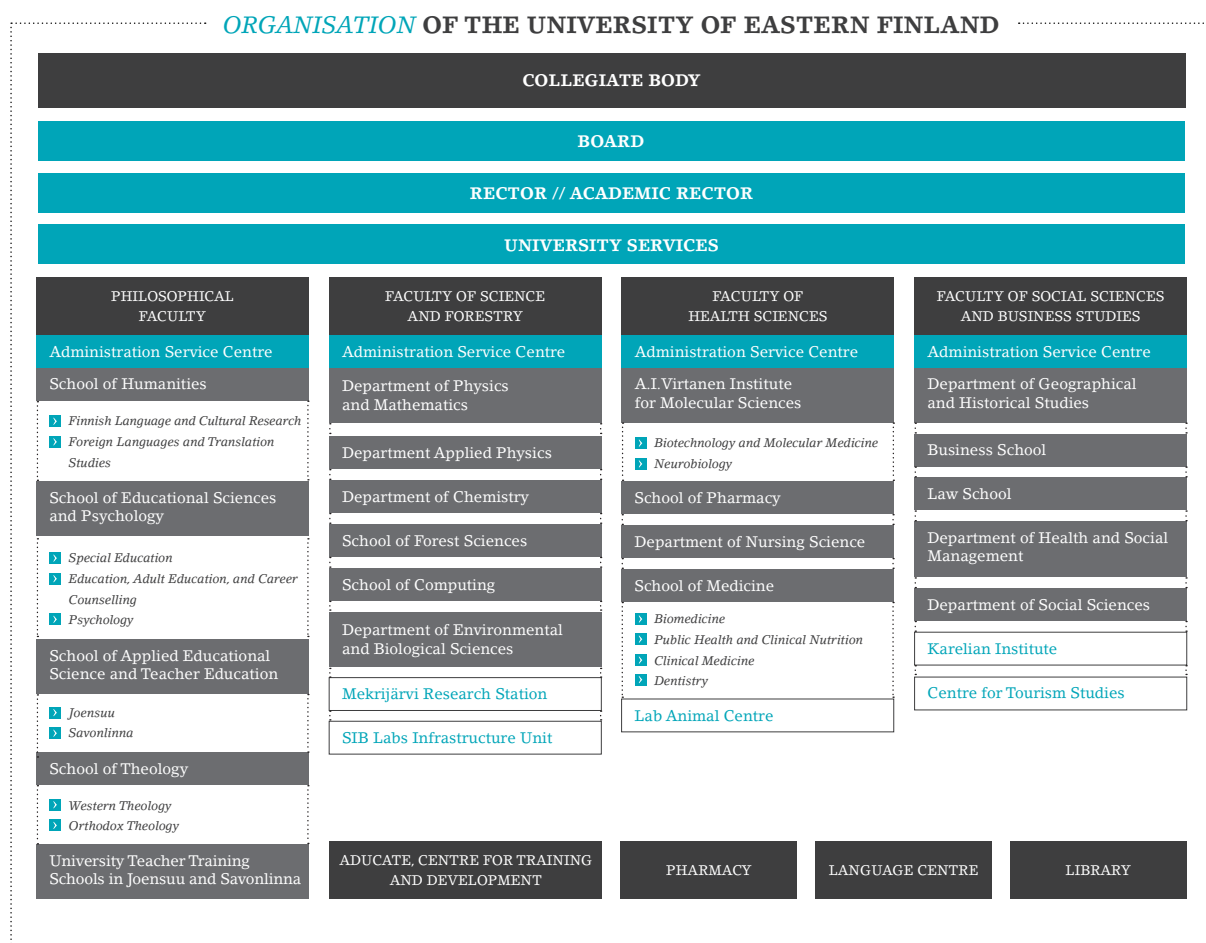


Figure 1. Organisation of the University of Eastern Finland.

In accordance with its strategy, the university has sought to make its administration transparent and efficient. In compliance with the Universities Act, the Board, the Rectors, the University Collegiate Body, the Faculty Councils and the Deans are responsible for the administration of the university. Moreover, in compliance with the university's Administrative Regulations, the university also has a Research Council, a Council for Teaching and Guidance, and a Board of Appeals.

With its extensive networks, our multidisciplinary and international university constitutes a high quality competence cluster. The university's campuses in both Kuopio and Joensuu are significant research and innovation centres. In the close vicinity of the campuses, several national-level research institutes, the European Forest Institute, Kuopio University Hospital, technology parks and knowledge-based enterprises are housing their activities. This enables close collaboration in problem-based research benefitting from shared professorships, research infrastructures and doctoral training activities. UEF has strategic collaboration agreements in research with the Natural Resources Institute Finland, the

Finnish Environment Institute, the Finnish Meteorological Institute, VTT Technical Research Centre of Finland, the National Institute for Health and Welfare, the Finnish Institute of Occupational Health, the Finnish Food Safety Authority Evira, and the Geological Survey of Finland.

Table 1. The University of Eastern Finland in figures (2015, *2014).

	UEF	NATIONAL PROPORTION %
Students in degree programmes	16128	10.0
Master's degrees	1360	9.0
Doctor's degrees	162	8.6
Peer-reviewed scientific publications*	2270	9.2
Staff (full- time equivalent)	2252	7.8
University basic funding (M€)*	144	8.2
Other revenues (M€)*	88	8.4

The Board comprises 10 members, of whom 4 are external members. The Board defines the university's central goals and strategy. Furthermore, the Board elects the Rectors of the university.

The University of Eastern Finland has a Rector and an Academic Rector, both of whom are based at a different main campus of the university. The Rector attends to the tasks defined in the Universities Act, while the Academic Rector, operating on the other campus, attends to tasks relating to teaching and research. The term of office of the Rectors is five years.

The UEF Leadership Group prepares matters for decision-making for the Board and the Rectors. Furthermore, the UEF Leadership Group coordinates and prepares matters of the faculties and University Services. The members of the UEF Leadership Group comprise the Rectors, the Deans and the Director of Administration. Directors of University Services attend the meetings in the role of permanent experts.

The University Collegiate Body comprises a total of 24 members. Eight of the members represent the university's professors, eight represent the university's teaching, research and general staff, and eight represent the university's students. The term of office of the University Collegiate Body is four calendar years. The term of office of the members representing the university's students is two calendar years. For the purposes of executing practical administrative tasks, the university has University Services. The tasks of University Services are described in the university's Administrative Regulations, and these tasks are carried out at the different campuses by Executive Services, Human Resources Services, Development Services, Student and Learning Services, Financial Services and IT Services.

Each of the faculties at the university has an Administration Service Centre managed by an Executive Head of Administration who is subordinate to the Dean. The Administration Service Centre is responsible for providing supporting services for the faculty's teaching and research activities and for other supporting services the faculty requires. Its responsibilities encompass the faculty's general, financial, human resources as well as academic and student administration.

2 DESCRIPTION OF THE STRATEGY AND STRATEGY FORMULATION PROCESS OF UEF

WHEN THE ACTIVITIES of the University of Eastern Finland were launched on 1 January 2010, the university had a strategy for the transition period, entitled “A university of the future”, which had been approved by the Boards of the University of Joensuu and the University of Kuopio. A specified version of this strategy was approved by the new university’s Board on 22 March 2010. Figure 2 describes the linkage of the strategy to the Quality Management System.



Figure 2. University of Eastern Finland’s strategic leadership, enterprise resource planning and Quality Management System.

The university’s Board approved the new strategy for 2015–2020 on 1 April 2014. The strategy formulation process was led by the Rector, and it sought to engage the entire academic community: staff members, students and stakeholder groups alike. The Chair of the Board also played a prominent role in the strategy formulation process.

The process proceeded through a future-oriented, functional and strategy-formulating perspective.

1) The orientation towards the future was also realised in the form of a separate foresight project carried out in 2012–2014. The project’s steering committee also had student representation and several external members, and the project carried out a survey using the Delphi method, at the end of which semi-structured interviews were carried out with approximately 30 experts from within and outside the university on the basis of the data gathered in the first phase of the survey. This scenario work was continued with Demos, a think-tank.

2) The initial situation was charted with the help of various surveys and evaluations.

- ▣ A benchmarking project carried out against Syd Danske Universitet in 2012–2013 provided comparison data and ideas about the quality, level and efficiency of the activities, as well as about the strategy formulation process, the merger process and internationalisation.
- ▣ A Business Area survey carried out in 2012 charted the attitudes of the University of Eastern Finland’s teaching and research staff towards the commercialisation of research and expertise-based entrepreneurship, as well as how familiar the staff was with the topic.

- ▣ A survey charting innovation activities carried out in 2013 provided increasingly detailed data on the viewpoints of the university, stakeholders and entrepreneurs relating to joint innovation projects.
- ▣ The faculty-specific Research Assessment Exercises constituted a significant part of analysing the current state and future of the activities. This evaluation is described in more detail in the self-evaluation report.

In addition, diverse statistical data were collected and made use of.

3) During the formulation of the strategy, opportunities for participation were ensured in the form of strategic surveys, workshops and faculty-specific strategy enquiries. This also involved seminars aimed at the university's leadership and enquiries aimed at the entire academic community.

Statements on questions posed on the basis of the strategy's draft version were asked for and received from the university's units in March 2014.

4) The strategy was approved by the university's Board on 1 April 2014, after which a Strategic Implementation Programme and a plan for the utilisation of strategic funding were prepared.

The implementation of the strategy and the preparation of the own, more specific strategies of the faculties, independent institutes and service centres began thereafter, with a particular focus on the results of, e.g., the Research Assessment Exercise and the definition of the term "student-centredness".

Figure 3 describes the entire strategy formulation process.

1) The strategy formulation process is launched in a seminar aimed at the UEF leadership on 5–6 March 2013.	2) The UEF Leadership Group discusses the strategy in a meeting on 13 March 2013 and in an evening session on 22 April 2013.	3) A strategy survey aimed at the staff in April 2013.	4) The Board discusses the strategy in an evening session on 28 May 2013.	5) The UEF Leadership Group discusses the strategy on 30 May 2013.
10) A seminar addressing the university's learning environments on 29–30 August 2013.	9) The UEF Leadership Group discusses the strategy on 21 August 2013.	8) The UEF Leadership Group discusses the strategy on 19 June 2013.	7) The University's Advisory Board discusses the strategy.	6) Publication of the final report of the university's foresight project and related seminar 8 June 2013.
11) The university's Board discusses the strategy in an evening session on 4 September 2013.	12) The faculties' strategy-related events and discussions in September 2013.	13) A survey relating to values and a stakeholder survey in October 2013	14) The UEF Leadership Group discusses the strategy. Demos Helsinki holds a strategy workshop on 4 November 2013.	15) A seminar for stakeholders. Demos Helsinki holds a strategy workshop on 5 November 2013.
20) The second processing of the strategy by the university's board on 16 December 2013.	19) A strategy seminar for the UEF leadership on 11–12 December 2013. Demos Helsinki holds a strategy workshop.	18) The UEF Leadership Group discusses the strategy on 4 December 2013.	17) A survey on the strategy's structure in November 2013.	16) The first processing of the strategy by the university's Board on 13 November 2013.
21) A strategy survey aimed at students in January 2014.	22) The UEF Leadership Group discusses the strategy on 10 January 2014.	23) A research assessment and strategy seminar on 4 February 2014.	24) The UEF Leadership Group discusses the strategy on 14 February 2014.	25) The university's Board discusses the strategy in an evening session on 24 February 2014.
30) The university's Board approves the strategy on 1 April 2014.	29) The university's Cooperation Committee discusses the strategy on 24 March 2014.	28) The University Collegiate Body discusses the strategy on 21 March 2014.	27) The UEF Leadership Group discusses the strategy on 18 March 2014.	26) Statements on the strategy are requested between 26 February and 14 March 2014.

Figure 3. The strategy formulation process as a whole.

The new strategy is built around global challenges for which the university seeks to find solutions through interdisciplinary research and education. The challenges are: Ageing, lifestyles and health; Learning in a digitised society; Cultural encounters, mobilities and borders, and Environmental change and sufficiency of natural resources.

The university's main strategic goals for 2020 are:

1) The University of Eastern Finland seeks to be among the leading 200 research universities in the world and, in the strong research areas, among the world's leading 50 research universities. In fact, UEF was ranked among the world's top universities in several university rankings in 2015:

- 347th, ranked by QS World University Rankings
- 351-400, ranked by Times Higher Education World University Rankings, THE
- 401-500, ranked by ARWU, Shanghai
- Among the young universities: 43rd, ranked by QS, and 55th, ranked by THE.

Our high standard of research and appealing academic offering build the competence base of the future. The focused research areas are characterised by a high scientific quality, interdisciplinarity, constant renewal and international networking.

2) We are also an international, multidisciplinary and student-centred university. Our teaching is based on latest research findings and our students graduate within the target time. We train experts for tomorrow's working life. We want to be home to Finland's best academic learning environments and most efficient study processes.

3) The university is an internationally recognised and socially impactful actor. We are known as a partner who takes the initiative, as a developer of business activities that are rooted in our expertise, and as a producer of research data and education which support the finding of solutions to global challenges.

Research and education constitute means for creating a responsible and sustainable future. The Strategic Implementation Programme further specifies the strategy and defines a schedule for the most important measures.

The university's staff and students are its most important asset. The university is a creative, encouraging and dialogue-driven scientific community, and an active and responsible actor in society.

The achievement of the university's strategic goals calls for bold choices and collaboration with research organisations and trade and industry. Furthermore, success in the recruitment of staff and students, and increased international mobility are needed.

The strategy and its realisation are reviewed on an annual basis and slight specifications are made when necessary, while at the same time preparing for renewing the strategy. The strategy formulation process described above attracted plenty of positive feedback from the academic community, and the positive experiences obtained can be made use of in the formulation of the university's next strategy.

3 FIGURE AND A CONCISE DESCRIPTION OF THE QUALITY MANAGEMENT SYSTEM

Quality at the University of Eastern Finland refers to the expediency of the activities relating to education, research and social interaction, and to a high level of the related outcomes. The foundations of our activities are rooted in customer needs and expectations, and in fulfilling them. We develop our activities on the basis of feedback and continuous evaluation, and best practices are efficiently disseminated within the university.

The university's Quality Management System observes the PDCA cycle and the requirements of the ESG standard, and loosely also the ISO9001 standard. Elements of sustainable development are integrated into the Quality Management System. Our Quality Management System is linked to strategic leadership through, for example, management reviews, indicators, feedback systems, evaluations, audits and benchmarking. Our Quality Management System is documented in the university's Main Quality Manual, as well as in subordinate quality manuals. The university's Quality Manager and Quality Coordinator, as well as various teams focusing on quality, are tasked with developing the Quality Management System further. Students can participate in quality work through decision-making and preparatory working groups, as well as by giving feedback and serving as internal auditors, as described in Figure 4.



Figure 4. Participation of the students and staff in quality work.

4 STATISTICS ON EDUCATION

Table 2. Applicants and applicants accepting the offered study place in 2013–2015, joint application system, spring.

Source 2013–2014: the university's admissions statistics, 2015: Vipunen – Education Statistics Finland
Initial data by study programme; the departments' programmes have been merged by unit.

FACULTY	2013		2014		2015	
	All applicants	Applicants accepting the offered study place	All applicants	Applicants accepting the offered study place	All applicants	Applicants accepting the offered study place
PHILOSOPHICAL FACULTY	8 227	659	5 201	635	4 757	624
School of Humanities	1 433	245	1 333	175	1 022	167
Finnish Language and Cultural Studies	368	63	375	57	258	59
Foreign Languages and Translation Studies	1 065	182	958	118	764	108
School of Educational Sciences and Psychology	2 448	129	2 585	144	2 013	146
Special Education	744	40	838	40	486	50
Education, Adult Education and Career Counselling	803	49	787	64	557	55
Psychology	901	40	960	40	970	41
School of Applied Educational Science and Teacher Education	3 996	276	4 101	249	2 834	253
Joensuu	1 421	90	1 618	89	1 101	86
Savonlinna	2 575	186	2 483	160	1 733	167
School of Theology	350	65	332	67	288	58
Western Theology	291	54	291	55	244	48
Orthodox Theology	59	59	41	12	44	10
FACULTY OF SCIENCE AND FORESTRY	2 718	430	2 055	434	1 620	385
Department of Biology	637	39	579	44	341	40
Department of Physics and Mathematics	445	85	367	52	262	41
Department of Physics and Mathematics / Department of Chemistry (subject teacher/class teacher education in mathematics, physics and chemistry)			227	58	98	30
Department of Chemistry	268	41	260	39	157	36
School of Forest Sciences	215	35	176	35	153	36

FACULTY	2013		2014		2015	
	All applicants	Applicants accepting the offered study place	All applicants	Applicants accepting the offered study place	All applicants	Applicants accepting the offered study place
FACULTY OF SCIENCE AND FORESTRY	2 718	430	2 055	434	1 620	385
Department of Applied Physics	286	68	253	55	234	48
School of Computing	591	122	627	116	420	115
Joensuu	263	46	280	40	189	48
Kuopio	328	76	347	76	231	67
Department of Environmental Science	276	40	256	35	157	39
FACULTY OF HEALTH SCIENCES	3 618	426	3 337	484	3 425	486
School of Pharmacy	1 050	183	1 164	195	1 683	198
School of Medicine	2 568	243	2 853	289	2 712	288
Biomedicine	237	38	267	40	304	44
Dentistry	356	41	359	41	356	40
Public Health and Clinical Nutrition	962	30	1 012	40	815	40
Department's shared (degree programme in medicine)	1 013	134	1 215	168	1 237	164
FACULTY OF SOCIAL SCIENCES AND BUSINESS STUDIES	5 508	374	4 437	429	5 628	425
Department of Geographical and Historical Studies	639	77	675	65	519	67
Business School	2 212	99	2 520	121	3 029	115
Joensuu	1 072	49	1 066	61	1 522	58
Kuopio	1 140	50	1 454	60	1 507	57
Law School	1 068	59	859	90	1 113	92
Department of Social and Health Management	171	15	145	15	109	15
Department of Social Sciences	1 418	124	1 403	138	1 192	136
Joensuu	351	30	321	30	260	30
Kuopio	1 067	94	1 082	108	932	106
UNIVERSITY, TOTAL	12 510	1 889	13 189	1 982	13 060	1 920

Table 3. International students by faculty, total number from all levels of education.

Source: OODI 20 September; statistics/Statistics Finland

FACULTY	2013	2014	2015
Philosophical Faculty	115	129	142
Faculty of Science and Forestry	434	492	523
Faculty of Health Sciences	211	216	219
Faculty of Social Sciences and Business Studies	147	192	224
TOTAL	907	1029	1108

Table 4. Completed degrees by organisation, duration of study of students completing a Bachelor's degree, average duration as academic semesters.

Source: OODI/OPRI

FACULTY/ DEPARTMENT/ UNIT	2013		2014		2015	
	Number of degrees	Semesters, net, average	Number of degrees	Semesters, net, average	Number of degrees	Semesters, net, average
PHILOSOPHICAL FACULTY	460	8.9	467	8.8	484	8.8
School of Humanities	115	10.7	126	11.2	115	11.3
Finnish Language and Cultural Studies	39	10.2	48	9.8	36	9.3
Foreign Languages and Translation Studies	76	10.9	78	12.1	79	12.2
School of Educational Sciences and Psychology	108	8.0	86	7.0	117	7.8
Special Education	33	8.2	30	7.1	37	8.7
Education and Adult Education	37	7.5	19	6.3	30	7.7
Career Counselling	19	9.4	14	7.8	20	8.5
Psychology	19	7.2	23	6.8	30	6.4
School of Applied Educational Science and Teacher Education	198	8.3	205	7.9	215	8.0
Joensuu	72	8.7	82	8.5	77	8.8
Savonlinna	126	8.1	123	7.5	138	7.6
School of Theology	39	9.5	50	9.6	37	9.4
Western Theology	35	9.3	44	9.3	32	8.9
Orthodox Theology	4	10.8	6	11.2	5	12.4
FACULTY OF SCIENCE AND FORESTRY	169	11.7	147	11.8	216	11.1
Administration of the Faculty of Science and Forestry	26	11.5	22	13.7	19	15.0
Department of Biology	26	11.5	24	9.2	56	9.8
Department of Physics and Mathematics	27	13.2	30	11.2	40	9.8
Department of Applied Physics	11	8.0	6	8.8	6	8.0
Department of Chemistry	7	14.0	11	9.7	10	11.8
School of Forest Sciences	21	8.2	13	9.9	26	10.3
School of Computing	25	14.2	28	15.6	44	13.0
Joensuu	6	11.7	7	14.6	15	14.5
Kuopio	19	15.1	21	16.0	29	12.2
Department of Environmental Science	26	12.0	13	11.7	15	11.9

FACULTY/ DEPARTMENT/ UNIT	2013		2014		2015	
	Number of degrees	Semesters, net, average	Number of degrees	Semesters, net, average	Number of degrees	Semesters, net, average
FACULTY OF HEALTH SCIENCES	240	6.7	254	6.7	242	6.7
School of Pharmacy	116	5.8	135	5.9	139	6.1
Department of Nursing Science	76	6.3	49	5.0	47	6.0
School of Medicine	48	9.3	70	9.3	56	8.8
Biomedicine	14	8.2	18	10.1	18	9.7
Public Health	16	10.4	14	11.0	19	9.3
Clinical Nutrition	18	9.2	38	8.3	19	7.5
FACULTY OF SOCIAL SCIENCES AND BUSINESS STUDIES	387	9.4	340	9.2	418	9.9
Department of Geographical and Historical Studies	66	10.3	34	11.1	71	10.1
Department of Geographical and Historical Studies, shared	1	11.0				
History	44	10.7	17	11.1	32	11.1
Geography (geography and human geography)	17	9.4	17	11.1	33	9.0
Environmental Policy	4	8.8			6	10.8
Business School	112	9.9	96	9.0	124	10.4
Joensuu	56	9.6	54	9.1	69	10.4
Kuopio	56	10.1	42	8.8	55	10.4
Law School	74	7.3	71	8.1	79	8.8
Department of Social and Health Management	36	9.7	29	8.0	54	10.7
Department of Social Sciences	99	9.8	110	9.9	90	9.6
Joensuu	25	11.2	30	11.6	30	10.6
Kuopio	74	9.3	80	9.3	60	9.2
UNIVERSITY, TOTAL	1256	9.0	1208	8.8	1360	9.2

Table 5. Completed degrees by organisation, duration of study of students completing a Master's degree, average duration as academic semesters.

Source: OODI/OPRI

FACULTY/ DEPARTMENT/ UNIT	2013		2014		2015	
	Number of degrees	Semesters, net, average	Number of degrees	Semesters, net, average	Number of degrees	Semesters, net, average
PHILOSOPHICAL FACULTY	10	3.0	8	3.5	10	3.3
School of Humanities	10	3.0	7	3.4	7	2.9
Foreign Languages and Translation Studies						
<i>Master's Degree Programme in Clinical Linguistics (EMCL)</i>						
School of Educational Sciences and Psychology			1	4.0	1	5.0
Education and Adult Education						
<i>Master's Degree Programme in Educational Sciences</i>			1	4.0		
<i>Degree Programme in Primary Education</i>					1	5.0
School of Applied Educational Science and Teacher Education					2	4.0
Joensuu						
<i>Master's Degree Programme in Early Language Education for Intercultural Communication</i>						
FACULTY OF SCIENCE AND FORESTRY	77	5.1	69	4.7	91	5.0
Department of Biology	1	5.0	3	4.7	1	6.0
<i>Master's Degree Programme in Environmental Biology</i>						
Department of Physics and Mathematics	8	4.0	13	4.3	13	5.1
<i>Erasmus Mundus Master programme Optics in Science and Technology (OpSciTech)</i>					1	6.0

FACULTY/ DEPARTMENT/ UNIT	2013		2014		2015	
	Number of degrees	Semesters, net, average	Number of degrees	Semesters, net, average	Number of degrees	Semesters, net, average
FACULTY OF SCIENCE AND FORESTRY	77	5.1	69	4.7	91	5.0
<i>International two- year Master's Degree Programme in Photonics</i>	8	4.0	13	4.3	12	5.0
Department of Applied Physics			1	4.0	1	5.0
<i>Master's Degree Programme in Atmosphere-Biosphere Studies</i>						
Department of Chemistry	27	4.5	17	4.6	21	4.1
<i>Master's Degree Programme for Research Chemists</i>						
School of Forest Sciences	18	5.5	17	5.5	31	5.1
<i>Master's Degree Programme in Wood Materials Science</i>					8	4.6
<i>MSc in European Forestry</i>	14	5.0	13	5.2	12	5.3
<i>Master's Degree Programme (CBU) in Forestry and Environmental Engineering</i>	4	7.3	4	6.5	5	5.0
<i>Master's Degree Programme in Bio- Economy and Natural Resources Management</i>					6	5.5
School of Computing	17	5.4	12	4.3	19	5.2
Joensuu						
<i>Master's Degree Programme in Information Technology</i>	8	7.6	7	5.1	11	6.2
<i>International CBU Master's Degree Programme in Information and Communication Technology</i>	1	4.0				

FACULTY/ DEPARTMENT/ UNIT	2013		2014		2015	
	Number of degrees	Semesters, net, average	Number of degrees	Semesters, net, average	Number of degrees	Semesters, net, average
FACULTY OF SCIENCE AND FORESTRY	77	5.1	69	4.7	91	5.0
<i>Master's Degree Programme (CBU) in Information and Communication Technology</i>	1	5.0			2	6.5
<i>Master's Degree Programme in Color Informatics and Media Technology</i>	7	3.0	5	3.0	6	3.0
Department of Environmental Science	6	7.3	6	4.7	5	6.0
<i>Master's Degree Programme in Environmental Biology and Biogeochemistry</i>	2	10.0				
<i>Master's Degree Programme in Environmental Biology</i>	1	5.0	3	4.0	5	6.0
<i>Master's Degree Programme in General Toxicology and Environmental Health Risk Assessment</i>	3	6.3	3	5.3		
FACULTY OF HEALTH SCIENCES	12	6.4	33	5.5	22	8.0
A.I. Virtanen Institute for Molecular Sciences	2	9.0			2	12.0
Biotechnology and Molecular Medicine	1	9.0				
<i>Master's Degree Programme in Molecular Medicine and Biotechnology</i>						
Neurobiology	1	9.0			2	12.0
<i>Master's Degree Programme in Neurobiology</i>						

FACULTY/ DEPARTMENT/ UNIT	2013		2014		2015	
	Number of degrees	Semesters, net, average	Number of degrees	Semesters, net, average	Number of degrees	Semesters, net, average
FACULTY OF HEALTH SCIENCES	12	6.4	33	5.5	22	8.0
School of Pharmacy	5	6.0	7	6.4	9	7.4
<i>Master's Degree Programme in General Toxicology and Environmental Health Risk Assessment, General Toxicology</i>						
Department of Nursing Science			3	6.0	2	6.5
<i>Master's Degree Programme in Health Promotion and Nursing Science</i>						
School of Medicine	5	5.8	23	5.2	9	8.1
Public Health						
<i>Master's Degree in Public Health</i>	5	5.8	17	5.4	7	8.1
<i>Master's Degree Programme (CBU) in Public Health</i>	3		6	4.5	2	8.0
FACULTY OF SOCIAL SCIENCES AND BUSINESS STUDIES	16	9.1	31	9.1	21	7.8
Department of Geographical and Historical Studies	1	15.0	9	6.7	5	5.2
Department of Geographical and Historical Studies, shared			3	4.7		
<i>Master's Degree Programme in Environmental Policy and Law</i>			1	5.0		
<i>Master's Degree Programme in Border Crossings: Global and Local Societies in Transition</i>			2	4.5		

FACULTY/ DEPARTMENT/ UNIT	2013		2014		2015	
	Number of degrees	Semesters, net, average	Number of degrees	Semesters, net, average	Number of degrees	Semesters, net, average
FACULTY OF SOCIAL SCIENCES AND BUSINESS STUDIES	12	6.4	33	5.5	22	8.0
Geography (geography and human geography)	1	15.0	6	7.7		
<i>Master's degree in Human Geography</i>	1	15.0	5	8.2		
<i>Master's Degree Programme in Border Crossings: Global and Local Societies in Transition</i>			1	5.0		
Environmental Policy					5	5.2
Master's Degree Programme in Environmental Policy and Law						
Business School					3	4.0
Joensuu					2	4.0
<i>Master's Degree Programme in Service Management</i>					1	5.0
<i>Master's Degree Programme in Auditing</i>					1	3.0
Kuopio					1	4.0
<i>Master's Degree Programme in Innovation Management</i>						
Law School			1	3.0	2	5.0
<i>Master's Degree Programme in Environmental Policy and Law</i>						
Department of Social and Health Management	10	10.1	8	12.0	9	10.8
<i>Master's Degree Programme in Health and Human Services Informatics</i>						

FACULTY/ DEPARTMENT/ UNIT	2013		2014		2015	
	Number of degrees	Semesters, net, average	Number of degrees	Semesters, net, average	Number of degrees	Semesters, net, average
FACULTY OF SOCIAL SCIENCES AND BUSINESS STUDIES	12	6.4	33	5.5	22	8.0
Department of Social Sciences	5	6.0	13	9.4	2	9.0
Joensuu	5	6.0	11	9.7	2	9.0
<i>Master's Degree Programme in Cultural Diversity</i>	5	6.0	9	10.9		
<i>Master's Degree Programme in Border Crossings: Global and Local Societies in Transition</i>			2	4.5	2	9.0
Kuopio			2	7.5		
<i>Master's Degree Programme in International Social Work</i>						
ALL TOTAL/ AVERAGE	115	5.6	141	5.8	144	5.7

Table 6. Completed degrees by organisation, duration of study of students completing a doctoral degree, average duration as academic semesters.

Source: OODI/OPRI

FACULTY/ DEPARTMENT/ UNIT	2013		2014		2015	
	Number of degrees	Semesters, net, average	Number of degrees	Semesters, net, average	Number of degrees	Semesters, net, average
PHILOSOPHICAL FACULTY	18	12.8	14	13.3	23	12.9
School of Humanities	6	15.2			8	13.3
Finnish Language and Cultural Studies	5	15.2			6	13.3
Foreign Languages and Translation Studies	1	15.0			2	13.0
School of Educational Sciences and Psychology	2	6.5	5	10.4	6	13.7
Special Education	1	10.0	1	11.0	1	19.0
Education and Adult Education	1	3.0	1	6.0	2	10.0
Psychology			3	11.7	3	14.3
School of Applied Educational Science and Teacher Education	3	10.3	6	12.5	6	14.5
Joensuu	3	10.3	4	13.0	3	9.7
Savonlinna			2	11.5	3	19.3
School of Theology	7	13.7	3	19.7	3	7.3
Western Theology	4	11.8	3	19.7	2	5.5
Orthodox Theology	3	16.3			1	11.0
FACULTY OF SCIENCE AND FORESTRY	53	11.1	59	12.2	63	11.2
Administration of the Faculty of Science and Forestry	2	18.5				
Department of Biology	6	14.7	10	12.1	7	10.6
Department of Physics and Mathematics	13	8.8	4	11.5	11	7.7
Department of Applied Physics	12	10.7	16	10.6	9	11.4
Department of Chemistry	3	11.7	7	12.1	8	10.0
School of Forest Sciences	8	12.3	4	11.8	13	12.7
School of Computing	6	8.5	8	16.0	7	12.1
Joensuu	5	9.8	6	15.5	6	11.8
Kuopio	1	2.0	2	17.5	1	14.0
Department of Environmental Science	3	11.7	10	12.3	8	14.4

FACULTY/ DEPARTMENT/ UNIT	2013		2014		2015	
	Number of degrees	Semesters, net, average	Number of degrees	Semesters, net, average	Number of degrees	Semesters, net, average
FACULTY OF HEALTH SCIENCES	59	13.3	62	12.1	56	12.7
A.I. Virtanen Institute for Molecular Sciences	9	12.6	15	12.7	9	15.3
Biotechnology and Molecular Medicine	7	14.0	9	14.6	7	14.6
Neurobiology	2	7.5	6	10.0	2	18.0
School of Pharmacy	14	13.5	13	12.2	10	14.8
Department of Nursing Science	6	19.0	5	14.4	5	15.8
School of Medicine	30	12.4	29	11.3	32	10.9
Biomedicine	4	18.0	5	15.0	4	10.5
Public Health	6	17.2	2	11.0	2	10.0
Clinical Nutrition	2	9.0	2	9.5	2	12.5
Clinical Medicine	17	10.1	20	10.6	23	11.2
Dentistry	1	6.0			1	4.0
FACULTY OF SOCIAL SCIENCES AND BUSINESS STUDIES	24	13.5	27	14.6	20	13.3
Department of Geographical and Historical Studies	7	12.6	5	16.6	3	13.3
History	2	10.5	3	15.0	1	15.0
Geography (geography and human geography)	4	13.8	2	19.0	1	17.0
Environmental Policy	1	12.0			1	8.0
Business School	4	13.8	4	18.5	2	12.5
Joensuu	2	10.0			1	10.0
Kuopio	2	17.5	4	18.5	1	15.0
Law School			3	8.3	5	12.6
Department of Social and Health Management	6	13.5	2	19.0	3	13.0
Department of Social Sciences	7	14.1	13	13.3	7	14.0
Joensuu	3	15.7	6	14.7	5	14.6
Kuopio	4	13.0	7	12.1	2	12.5
ALL TOTAL/ AVERAGE	154	12.5	162	12.6	162	12.2

Table 7. Completed degrees by organisation, duration of study of students completing a Master's degree, average duration as academic semesters (Master's degree programmes excluded).

Source: OODI/OPRI

FACULTY/ DEPARTMENT/ UNIT	2013		2014		2015	
	Number of degrees	Semesters, net, average	Number of degrees	Semesters, net, average	Number of degrees	Semesters, net, average
PHILOSOPHICAL FACULTY	384	11.9	400	11.4	382	11.3
School of Humanities	84	14.9	94	14.0	100	13.8
Finnish Language and Cultural Studies	30	13.7	35	12.7	46	12.6
Foreign Languages and Translation Studies	54	15.6	59	14.8	54	14.7
School of Educational Sciences and Psychology	114	10.7	111	9.5	104	9.0
Special Education	24	9.8	27	11.8	27	9.0
Education, Adult Education and Career Counselling	1	15.0				
Education and Adult Education	41	12.2	29	9.2	21	10.7
Career Counselling	25	9.2	26	8.4	29	8.4
Psychology	23	10.4	29	8.7	27	8.5
School of Applied Educational Science and Teacher Education	136	10.9	151	11.0	134	10.6
Joensuu	63	10.5	71	11.4	59	10.8
Savonlinna	73	11.3	80	10.6	75	10.5
School of Theology	50	11.8	44	12.1	44	13.1
Western Theology	44	11.8	36	12.3	39	12.5
Orthodox Theology	6	12.5	8	11.5	5	17.4
FACULTY OF SCIENCE AND FORESTRY	165	13.4	156	13.6	161	13.9
Administration of the Faculty of Science and Forestry	21	13.4	22	14.5	13	15.7
Department of Biosciences	1	10.0			1	8.0
Biological Sciences					1	8.0
Department of Biosciences, Sotkamo	1	10.0				
Department of Biology	27	12.6	15	13.0	24	14.1
Department of Physics and Mathematics	35	13.1	28	13.2	35	14.2

FACULTY/ DEPARTMENT/ UNIT	2013		2014		2015	
	Number of degrees	Semesters, net, average	Number of degrees	Semesters, net, average	Number of degrees	Semesters, net, average
FACULTY OF SCIENCE AND FORESTRY	165	13.4	156	13.6	161	13.9
Department of Applied Physics	5	11.4	13	10.7	10	9.8
Department of Chemistry	9	14.1	9	13.4	9	14.8
School of Forest Sciences	30	12.6	22	12.6	22	12.0
School of Computing	23	16.5	33	16.4	35	15.1
Joensuu	9	14.8	9	16.7	13	13.9
Kuopio	14	17.6	24	16.3	22	15.8
Department of Environmental Science	14	13.2	14	11.7	12	13.5
FACULTY OF HEALTH SCIENCES	275	11.8	291	11.9	297	11.8
School of Pharmacy	44	9.3	46	8.8	45	9.5
Department of Nursing Science	51	8.2	53	9.1	46	9.0
School of Medicine	180	13.4	192	13.4	206	12.9
School of Medicine, shared	132	14.4	148	13.9	131	13.9
Biomedicine	9	9.0	6	10.8	19	13.2
Public Health	18	9.7	16	14.4	18	9.2
Clinical Nutrition	21	11.8	22	9.9	22	11.7
Dentistry					16	10.8
FACULTY OF SOCIAL SCIENCES AND BUSINESS STUDIES	355	10.5	385	11.2	396	11.8
Department of Geographical and Historical Studies	42	13.0	52	13.8	37	13.7
Department of Geographical and Historical Studies, shared	1	11.0	2	10.0		
History	24	14.8	32	14.0	25	13.6
Geography (geography and human geography)	13	10.2	17	14.0	10	13.7
Environmental Policy	4	12.3	1	14.0	2	15.0
Business School	110	9.9	104	10.7	118	11.6
Joensuu	48	9.9	48	11.3	69	12.5
Kuopio	62	9.9	56	10.3	49	10.2
Law School	55	9.5	62	10.0	79	11.4
Department of Social and Health Management	29	10.2	43	11.6	49	13.1

FACULTY/ DEPARTMENT/ UNIT	2013		2014		2015	
	Number of degrees	Semesters, net, average	Number of degrees	Semesters, net, average	Number of degrees	Semesters, net, average
FACULTY OF SOCIAL SCIENCES AND BUSINESS STUDIES	355	10.5	385	11.2	396	11.8
Department of Social Sciences	119	10.6	124	11.1	113	11.0
Joensuu	41	10.2	32	15.7	24	12.5
Kuopio	78	10.8	92	9.5	89	10.6
ALL TOTAL/ AVERAGE	1179	11.6	1232	11.7	1236	11.9

Table 8. Students by faculty, FTE.

Source: OODI 20 September; statistics/Statistics Finland

LEVEL OF EDUCATION / YEAR	Philosophical Faculty	Faculty of Science and Forestry	Faculty of Health Sciences	Faculty of Social Sciences and Business Studies	Total
Bachelor's degree					
2013	2 250.5	1 409.5	889.5	1 806.5	6 356.0
2014	2 263.0	1 415.5	929.5	1 834.0	6 442.0
2015	2 309.5	1 390.5	1 020.0	1 915.5	6 635.5
Master's degree					
2013	692.0	452.5	1 324.0	972.0	3 440.5
2014	681.5	469.5	1 405.5	1 051.0	3 607.5
2015	758.0	529.5	1 474.0	1 244.5	4 006.0
Licentiate degree					
2013	18.5	11.0	4.0	27.5	61.0
2014	23.0	10.0	3.5	27.5	64.0
2015	19.5	7.5	2.5	20.5	50.0
Doctoral degree					
2013	130.0	193.5	208.0	191.5	723.0
2014	135.0	214.5	214.5	194.5	758.5
2015	144.5	202.5	217.5	202.0	766.5
Other level of education (specialist degree in medicine and dentists)					
2013			208.5		208.5
2014			210.5		210.5
2015			217.5		217.5
TOTAL					
2013	3 091.0	2 066.5	2 634.0	2 997.5	10 789.0
2014	3 102.5	2 109.5	2 763.5	3 107.0	11 082.5
2015	3 231.5	2 130.0	2 931.5	3 382.5	11 675.5

Table 9. Student mobility by faculty, duration of the exchange more than 3 months.

Source: OODI/OPRI

YEAR / DIRECTION OF MOBILITY	Philosophical Faculty	Faculty of Science and Forestry	Faculty of Health Sciences	Faculty of Social Sciences and Business Studies	Total
2013					
To Finland	109	110	115	134	468
From Finland	65	59	48	80	252
2014					
To Finland	141	111	109	155	516
From Finland	88	50	34	120	292
2015					
To Finland	103	137	129	173	542
From Finland	80	68	54	101	303

Table 10. Degrees by faculty.

Source: OODI/OPRI

LEVEL OF EDUCATION / YEAR	Philosophical Faculty	Faculty of Science and Forestry	Faculty of Health Sciences	Faculty of Social Sciences and Business Studies	Total
Bachelor's degree					
2013	460	169	240	387	1256
2014	467	147	254	340	1208
2015	484	216	252	418	1370
Master's degree					
2013	394	242	287	371	1294
2014	408	225	324	416	1373
2015	392	252	319	417	1380
Licentiate degree					
2013	3	2	2	4	11
2014	3	1		8	12
2015	8	1		2	11
Doctoral degree					
2013	18	53	59	24	154
2014	14	59	62	27	162
2015	23	63	56	20	162
Other level of education (specialist degree in medicine and dentists)					
2013			66		66
2014			87		87
2015			83		83
TOTAL					
2013	875	466	654	786	2781
2014	892	432	727	791	2842
2015	907	532	710	857	3006

5 INFORMATION RELATING TO THE OPTIONAL TARGET

TABLE 9 ABOVE describes the overall situation of student mobility by faculty. Table 11 describes the most important source and destination countries of student mobility. These also clearly demonstrate how the Erasmus+, FIRST and Nordplus programmes have created permanent and safe student mobility practices. Furthermore, the bilateral agreements concluded with Japan and China play a significant role. The number of Free Mover students continues to decline.

Table 11. Student mobility by destination and source country in 2013–2015, duration of the exchange more than 3 months.

Source: Vipunen – Education Statistics Finland (data from OODI)

DESTINATION COUNTRIES OF UEF'S STUDENTS, 10 MOST POPULAR					
2013		2014		2015	
Total	250	Total	292	Total	303
Germany	29	Germany	34	Sweden	27
Sweden	26	Russia	27	Germany	23
UK	14	Sweden	21	UK	22
Austria	12	Austria	18	Russia	20
Japan	12	China	18	The Netherlands	19
France	11	UK	16	Spain	18
Spain	10	Japan	15	Japan	16
China	10	Spain	13	China	16
Hungary	10	The Netherlands	12	France	14
Republic of Korea (South Korea)	9	Republic of Korea (South Korea)	10	United States (USA)	12
In addition: Russia, United States (USA), The Netherlands, Ireland, Norway, Poland, Australia, Belgium, Ghana, Italy, Canada, Portugal, Switzerland, Iceland, Mexico, Brazil, Chile, South Africa, Slovenia, Denmark, Czech, Estonia, India, Kenya, Greece, Latvia, Lithuania, Malesia, Morocco, Namibia, Tanzania, Uganda, Vietnam		In addition: France, United States (USA), Australia, Ireland, Italy, Canada, Namibia, Norway, Portugal, Thailand, Hungary, Indonesia, Poland, Czech, Belgium, South Africa, Mexico, Chile, Ghana, Iceland, Latvia, Brazil, India, Cambodia, Greece, Croatia, Luxembourg, Malesia, Mozambique, Slovakia, Slovenia, Tanzania, Denmark, Turkey, New Zealand, Venezuela, Estonia		In addition: Czech, Australia, Austria, Canada, Republic of Korea (South Korea), Ireland, Italy, Greece, Portugal, Norway, Hungary, Belgium, Ghana, Mexico, Poland, Switzerland, Denmark, Estonia, Brazil, Chile, Indonesia, Iceland, Namibia, Turkey, India, Kenya, Croatia, Latvia, Luxembourg, Malesia, Morocco, Peru, Slovenia, Tanzania, Thailand, Ukraine	

SOURCE COUNTRIES OF STUDENTS COMING TO UEF, 10 MOST POPULAR

2013		2014		2015	
Total	452	Total	516	Total	541
Germany	59	Germany	85	Germany	96
Spain	43	Spain	60	Spain	56
Italy	32	France	42	France	53
France	30	The Netherlands	31	The Netherlands	36
Czech	29	Poland	26	Poland	32
Poland	26	Italy	24	Italy	27
Austria	24	Russia	23	Czech	26
The Netherlands	20	Czech	23	China	22
China	19	Austria	22	Japan	19
Russia	17	Slovakia	18	Turkey	18
<p>In addition: Japan, Slovakia, Latvia, Republic of Korea (South Korea), Lithuania, Turkey, UK, Hungary, Belgium, Greece, United States (USA), Portugal, Ghana, Brazil, South Africa, Mexico, Tanzania, Mongolia, Nigeria, Canada, Switzerland, Estonia, Morocco, Uganda, Cambodia, Kazakhstan, Luxembourg, Mozambique, Serbia</p>		<p>In addition: China, Latvia, Greece, Japan, UK, Turkey, Republic of Korea (South Korea), Hungary, Belgium, United States (USA), Portugal, Lithuania, Brazil, Serbia, Mexico, Ghana, Canada, Luxembourg, Kazakhstan, Morocco, Switzerland, Norway, Thailand, South Africa, Iceland, Cambodia, Estonia, Kenya, Kyrgyzstan, Peru, Romania</p>		<p>In addition: Russia, Republic of Korea (South Korea), Greece, Belgium, Austria, Lithuania, Portugal, Slovakia, Kenya, Latvia, UK, Hungary, Brazil, Mexico, Canada, Thailand, Nigeria, United States (USA), Luxembourg, Morocco, Slovenia, South Africa, Kyrgyzstan, Mozambique, Serbia, Switzerland, Estonia, Croatia, Peru, Tanzania, Romania, Uganda, Vietnam</p>	

6 INFORMATION RELATING TO THE DEGREE PROGRAMMES

6.1 Curriculum of the Bachelor's and Master's degree programmes in pharmacy

IT TAKES THREE YEARS of full-time study to complete the Bachelor of Science in Pharmacy degree, and this degree gives its holders qualification to work as a licensed health care professional authorised by the National Supervisory Authority for Welfare and Health (Valvira). Some students are eligible to pursue the Master of Science in Pharmacy degree which takes 2 years of full-time study.

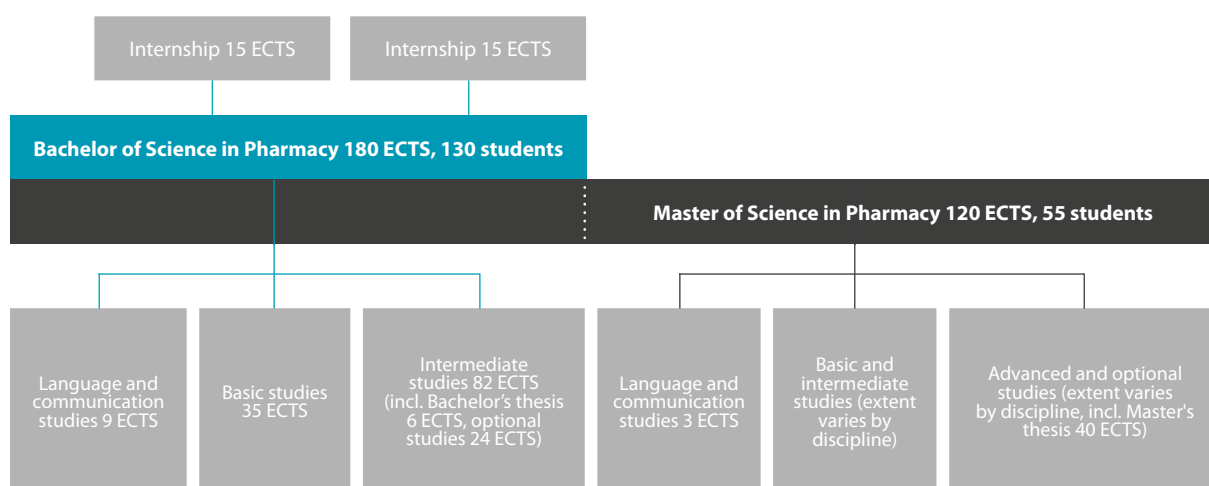


Figure 5. Study modules in the Bachelor's and Master's degree programmes in pharmacy.

The degrees are governed by the Government Decree on University Degrees (794/2004), the Directive 2005/36/EC of the European Parliament and of the Council on the recognition of professional qualifications, the Degree Regulations of the University of Eastern Finland, and standing orders of the Faculty of Health Sciences relating to degrees.

The degree structures are described in the Study Guide available on the university's website. Each course is described in the WebOodi system, and instructions and forms needed by students are available on the websites of the faculties and academic departments.

Teaching is offered in disciplines of biopharmacy, pharmaceutical chemistry, pharmaceutical technology, pharmacology, social pharmacy, and toxicology.

The Bachelor's and Master's degree programmes are popular, attracting large numbers of students. Students proceed smoothly in their studies and graduate within the target time. Graduates find employment easily in all sectors related to health, the majority in pharmacies (85 % of B.Sc.(Pharm) and >52 % of M.Sc.(Pharm)) in pharmaceutical industry as well as in teaching and research position and as authorities such as Fimea (Finnish Medicines Agency).

Table 12. Quality indicators of the degree programme in 2012–2015.

INDICATOR	2012	2013	2014	2015
Applicants, Bachelor's degree programme in pharmacy	513	635	694	1014
Percentage of applicants admitted to the Bachelors' degree programme in pharmacy	41%	32%	32%	20%

INDICATOR	2012	2013	2014	2015
Applicants, Master's degree programme in pharmacy	343	415	470	669
Percentage of applicants admitted to the Master's degree programme in pharmacy	18%	18%	15%	10%
Bachelor of Pharmacy degree	144	116	135	139
Master of Pharmacy degree	56	49	45	45
Percentage of students completing 55 ECTS per academic year	40%	42%	42%	45%
Completion of B.Sc.(Pharm) ^a	5.9 AS	5.8 AS	5.9 AS	6.1 AS
Completion of M.Sc.(Pharm) ^b	9.0 AS	9.0 AS	8.6 AS	9.5 AS
Employment rate of B.Sc.(Pharm) after 1 year graduation	81%	86% ^c		
Employment rate of M.Sc. (Pharm) after 1 year graduation	94%	93% ^d		
Studies in university pedagogy completed by the teaching staff (ECTS)	63 ECTS	68 ECTS	77 ECTS	82 ECTS

^a Duration of the studies in academic semesters (AS), target time 6 AS.

^b Duration of the studies in academic semesters, including the Bachelor's level studies, target time 10 AS.

^c Students 12%, other 1%, unemployed 1%.

^d Students 2%, other 2%, unemployed 3%.

6.2 Objectives and content of the Bachelor of Pharmacy degree

Students are expected to achieve the following skills in the Bachelor of Pharmacy programme:

- 1) ability to work in pharmaceutical roles in all sectors of health care;
- 2) ability to understand the properties of drugs and auxiliary substances;
- 3) ability to prepare drugs and monitor their quality;
- 4) ability to give guidance to customers relating to prescription drugs and over-the-counter drugs, evaluate customers' symptoms and refer them to treatment;
- 5) ability to identify, evaluate and monitor problems in drug therapy, as well as to promote health;
- 6) ability to engage in scientific thinking and to make independent and critical decisions in their work;
- 7) ability to maintain and develop their professional expertise, as well as to be eligible for specialisation studies and studies leading to a Master's degree.

Students holding a Bachelor of Pharmacy degree master the entire chain of drug therapy all the way from the preparation of drugs to their safe and purpose-serving use. Multi-modal teaching comprises a diverse set of laboratory work and drug preparation, and training in drug delivery and customer guidance.

The basic studies, which among other things focus on anatomy, physiology, micro- and molecular biology, chemistry and biochemistry, lay the foundations for understanding various diseases and their treatment. In the second year, the Bachelor of Pharmacy programme focuses on pharmacology and pharmacotherapy, as well as on studies that prepare students for working in a pharmacy. By the time of their first internship, students have acquired plenty of basic knowledge in pharmacy. The vision of working life needs obtained during the internship lays the foundations for the third year of studies, during which students among other things become familiar with clinical pharmacy, write a literature-based Bachelor's thesis and complete optional courses. Students can select optional courses

in the fields of natural sciences, biosciences, pharmaceutical treatment, social sciences and business studies.

6.3 Objectives and content of the Master of Pharmacy degree

Students are expected to achieve the following skills in the Master of Pharmacy programme:

- 1) ability to work in pharmaceutical roles in health care as supervisors, experts, trainers and developers;
- 2) ability to carry out research and development addressing drug ingredients and drugs, as well as research addressing the cost-efficiency and use of drugs; and
- 3) obtain eligibility for scientific and professional postgraduate education.

Students complete their Master of Pharmacy studies in a subject of their choice, and in most subjects, the obligatory courses constitute approximately one-third of the degree. The studies deepen and expand the skills obtained in the Bachelor of Pharmacy studies and create a solid scientific foundation for various expert roles as well as for carrying out research. The Master's thesis constitutes another third of the studies, and students carry out a scientific study usually as part of one of the research groups in their academic subject.

Optional courses, which also make up for approximately one-third of the degree, are a way for students to direct their studies in a direction that serves their future career aspirations and interests. In addition to courses in their own academic subject, students can also choose studies from other subjects at the Faculty of Health Sciences, and also from other faculties, as applicable.

6.4 Curriculum of the Doctoral Programme in Forests and Bioresources

Table 13 describes the doctoral programme's numbers of applicants, students accepting a study place in the doctoral programme, and graduates.

Table 13. Applicants, students accepting a study place, and graduates of the Doctoral Programme in Forests and Bioresources in 2012-2015.

	2012	2013	2014	2015
Applicants	8	7	14	11
Students accepting a study place in the programme	8	7	13	11
Doctoral degrees	9	8	4	11

Learning outcomes

Postgraduate education offered by the Doctoral Programme in Forests and Bioresources seeks to train doctoral students in a target time of four years in a manner which ensures that the programme's graduates are capable of working independently as researchers and experts in fields related to forests, forest-based renewable resources and biomaterials. In addition, the programme's graduates are expected to have the professional and societal qualifications to work in roles in which a doctoral degree is required. These qualifications comprise good scientific skills, the ability to find, produce and apply information, good team work skills, and the ability to work in international settings.

The doctoral programme's learning outcomes are for postgraduate students to:

- ▶ become well-versed in their own field of research and its scientific and social significance, and gain knowledge and skills needed to apply scientific research methods independently and critically and to produce new scientific knowledge within their field of research;
- ▶ become conversant with the development, basic problems and research methods of their field of research;
- ▶ gain such knowledge of the general theory of science and of other disciplines relating to their own field of research that enable them to follow developments in them;
- ▶ are familiar with the principles of scientific publishing;

- ▣ can present their research findings in a critical manner; and
- ▣ have sufficient language and communication skills and other skills to work in diverse and demanding expert and developer roles, and in international settings.

Degree structure

The postgraduate degree comprises the following components:

- ▣ A doctoral dissertation or a licentiate thesis
- ▣ Postgraduate studies (30 ECTS credits):
 - Transferable skills studies (5 ECTS)
 - Studies in the discipline and field of research (25 ECTS)

In addition to the postgraduate studies, students may be expected to complete supplementary studies. A maximum of 60 ECTS credits of supplementary studies may be required, depending on the student's Master's degree and other substance- and methodology-related skills for pursuing postgraduate studies. The objective of the supplementary studies is to provide the student with sufficient skills to write a doctoral dissertation/licentiate thesis in the field of forest sciences.

Transferable skills studies (5 ECTS)

The general transferable skills studies are recommended to include (1) studies in research ethics, and (2) studies in the management of research projects. In addition, the transferable skills studies may include, for example, studies in scientific communication and immaterial property rights, or other transferable skills studies offered by the UEF Doctoral School. The annually available courses are described in the UEF Doctoral School's curricula (e.g. Research Ethics and Management of a Research Project). Studies in the discipline and field of research (25 ECTS)

For the most part, the studies in the discipline and field of research can be chosen freely. The studies in the discipline and field of research are required to support the student's doctoral dissertation/licentiate thesis. However, the student is required to participate in a research seminar or an international scientific conference in the field (2 ECTS), at which the student gives a presentation, prepared in English on the topic of their doctoral dissertation or licentiate thesis project, or part of it. Under the Doctoral Programme in Forests and Bioresources, an annual research seminar (Research Seminar, Forest Sciences, 2 ECTS) is arranged in which students are provided with the opportunity to give a presentation on the research project related to their doctoral dissertations or licentiate theses. The studies within the discipline and field of research can include, for example the following forms of study:

- ▣ completing the courses in the theory of science and methodology, the associated lectures and exercises;
- ▣ reviewing scientific research and methodology related to the topic of the doctoral dissertation or licentiate thesis and preparing written summaries for the supervisor or sitting examinations on key works;
- ▣ preparing advanced-level courses related to the topic of the doctoral dissertation or licentiate thesis and teaching them.

In addition to courses provided by the University of Eastern Finland, corresponding courses arranged by other Finnish and foreign universities and institutes of higher education can be approved as transferable skills studies or studies in the discipline and field of research. Other courses suitable for postgraduate studies are provided, for example, by the Nordic university network NOVA.

Requirements laid down for the doctoral dissertation

A doctoral dissertation can be a scientific account based on independent research, which is deemed to increase knowledge in the field in question (a monograph). A doctoral dissertation can also consist of a sufficient number, determined by the university, of scientific publications discussing the same set of problems (article-based or compiled dissertation). They can be either published or intended/accepted for publication, and are outlined in a separate summary.

Within the faculty, the structure of an article-based or compiled doctoral dissertation is as follows:

- ▣ a doctoral dissertation in the form of a collection of research articles typically contains 3-5 peer-reviewed scientific articles, of which at least two or at least 50% must have been published or approved for publication in international, scientific peer review series;

- ▣ the dissertation must include an account of the author's contribution to joint publications.

RPL practices in postgraduate education

The Doctoral Programme in Forests and Bioresources applies the recognition and accreditation of prior learning (RPL) practices. Only (1) advanced-level courses completed in a Finnish or a foreign university or higher education institution or (2) skills and abilities acquired in scientific research projects may be recognised as RPL units and included in the Doctoral Programme studies. RPL units can be approved as either studies in the discipline and field of research or transferable skills studies. RPL units can also be approved as supplementary studies. However, earlier studies already included in the applicant's previous Bachelor's and Master's degree cannot be approved as RPL units. Approved RPL units are listed in the doctoral study plan.

7 SEPARATE APPENDICES

- 1) Strategy of the University of Eastern Finland
- 2) Main Quality Manual, Version 3.2 and the non-supervised English summary of it